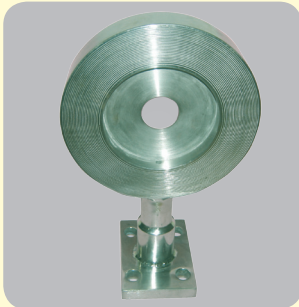
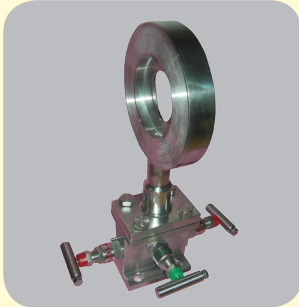


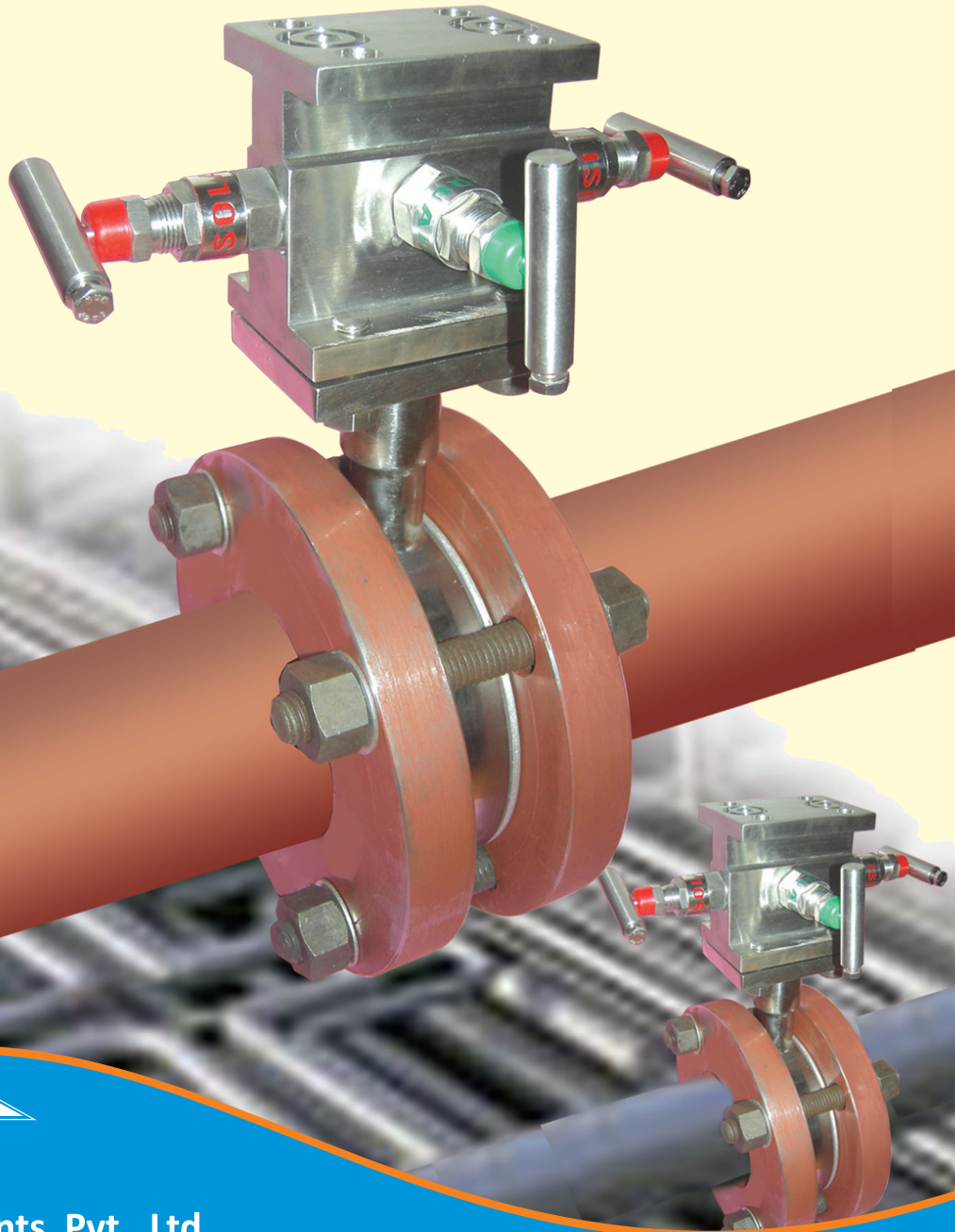


Carrier Rings



Carrier Rings are used

- 1) When flanges are not sufficiently thick for tapings.
- 2) On Lined Pipe Lines
- 3) Used with composite flanges
- 4) Where pipe tapings are not practical.



Tansa Equipments Pvt. Ltd.

Unit No. 35/36/41, Om Anand Industrial estate, M. S. Road, Raghunath Nagar, Thane - 400604 (Maharashtra) India.
Tel. : 2583 2323 , 65720669 Fax : 2582 3708,
E-mail : tansaindia@gmail.com / tansa@mtnl.net.in / sales@tansa.co.in
Website : www.tansa.co.in, www.rotameters.co.in, www.orificeplate.in, www.flowmetersindia.com

We also manufacture Glass Tube, Metal Tube, Purge, Acrylic, By Pass Rotameters & Orifice Assemblies.

● Due to continuous development specifications are subject to change without prior notice.

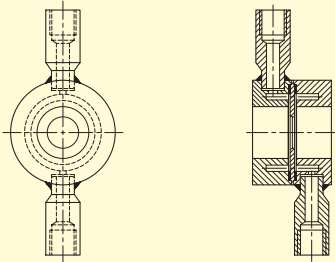
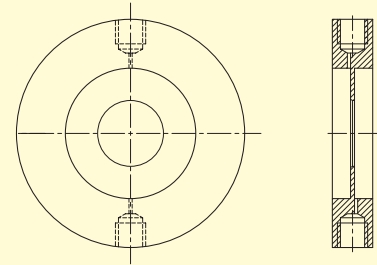


CAT No. - CR 1-010412



Type CR1

This Carrier Ring is made from solid one piece, Orifice plate is part of this carrier Ring. Tapping position is fixed at the time of manufacturing and can not be changed afterwards. These are manufactured for line size 15NB on wards. Tap type is corner tap.



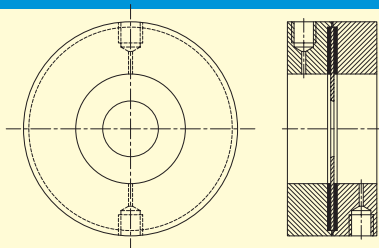
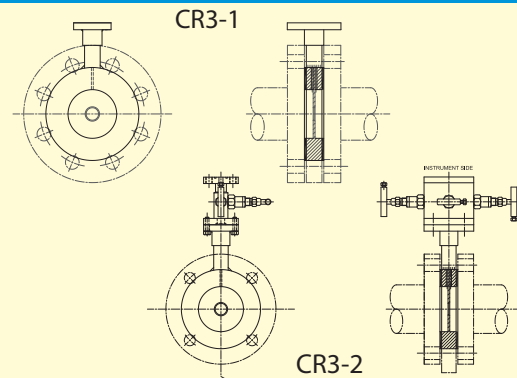
Type CR2

Orifice Plate can be changed whenever necessary. Annular chamber improves the pressure signal. Tap type is corner tap

Type CR3-1 / CR3-2

Carrier ring is provided with Transmitter Pad.(CR3-1) Transmitter can be directly mounted on the pad. 3 Valve Manifold also can be used to mount Transmitter. (CR3-2).

No need of piping. Less number of joints elements leakage possibilities. Model is very compact. Orifice plate can be a part of Carrier Ring or can be provided separately and screwed on the carrier ring. Tap type is corner tap.

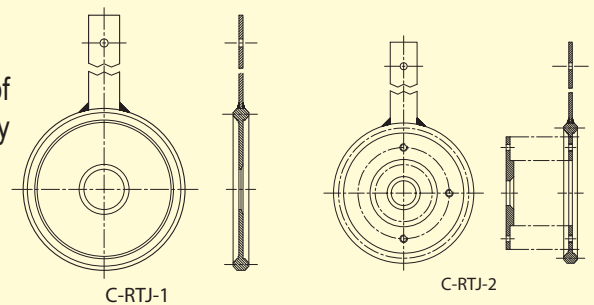


Type CR4

Used for By Pass Rotameter. Tap type is flange Tap. Orifice plate can be changed if required. Tap position can be changed.

Type C-RTJ-1 & 2

Used in all flange applications. Orifice Plate is an integral part of Carrier Ring (C-RTJ1). Orifice Plate can be provided separately and screwed on the carrier ring (C-RTJ-2.)



Tansa Equipments Pvt. Ltd.

Unit No. 35/36/41, Om Anand Industrial estate, M. S. Road, Raghunath Nagar, Thane - 400604 (Maharashtra) India.
 Tel. : 2583 2323 , 65720669 Fax : 2582 3708,
 E-mail : tansaindia@gmail.com / tansa@mtnl.net.in / sales@tansa.co.in
 Website : www.tansa.co.in, www.rotameters.co.in, www.orificeplate.in, www.flowmetersindia.com

We also manufacture Glass Tube, Metal Tube, Purge, Acrylic, By Pass Rotameters & Orifice Assemblies.

● Due to continuous development specifications are subject to change without prior notice.



CAT No. - CR 1-01042